

2 Imprint

4 Contents

# Contents

## Theme Hotels

6 Foreword

### designed spaces

92 Arte Luise Kunsthôtel | [Berlin](#)

98 Pflaums Posthotel | [Pegnitz](#)

104 Aenea Designhotel | [Wörthersee](#)

110 Augarten Hotel | [Graz](#)

116 Style Hotel Vienna | [Vienna](#)

122 Der Teufelhof | [Basel](#)

128 The Hotel | [Lucerne](#)

### luxury residences

136 The Regent | [Berlin](#)

142 The Westin Bellevue | [Dresden](#)

148 Hotel Imperial | [Vienna](#)

154 Hotel Eden Roc | [Ascona](#)

160 Mandarin Oriental Hotel du Rhône | [Geneva](#)

166 Victoria-Jungfrau Grand Hotel & Spa | [Interlaken](#)

172 Lausanne Palace & Spa | [Lausanne](#)

178 Hôtel des Trois Couronnes | [Vevey](#)

### historical ties

10 Mövenpick Hotel Berlin, near  
Potsdamer Platz | [Berlin](#)

16 Hotel Schloss Neuhardenberg |  
[Neuhardenberg](#)

22 Hotel Elephant | [Weimar](#)

28 Kloster Hornbach | [Hornbach](#)

34 Dorint Sofitel Bayerpost |  
[Munich](#)

40 Widder Hotel | [Zurich](#)

### mountain pastime

48 Inter Continental Resort  
Berchtesgaden |  
[Berchtesgaden](#)

54 Hotel Madlein | [Ischgl](#)

60 Park Hotel Waldhaus | [Flims](#)

66 Romantic-Hotel Chesa  
Grischuna | [Klosters](#)

72 Riders Palace | [Laax](#)

78 Hotel Misani | [St. Moritz](#)

84 Hotel Castell | [Zug](#)

### wellness islands

186 Yachthafenresidenz Hohe Düne |  
[Rostock-Warnemünde](#)

192 Zur Bleiche Resort & Spa | [Burg im Spreewald](#)

198 Hotel Landhaus Wachtelhof | [Rotenburg](#)

204 Rogner Bad Blumau Hotel & Spa | [Bad Blumau](#)

210 Schwarzer Adler | [Kitzbühel](#)

216 La Réserve Hotel & Spa | [Geneva](#)

222 Lenkerhof Alpine Resort | [Lenk im Simmental](#)

228 Therme Vals | [Vals](#)

### urban hideouts

236 Atlantic Hotel Galopprennbahn | [Bremen](#)

242 Inn Side Premium Hotel | [Bremen](#)

248 Bristol Hotel | [Frankfurt](#)

254 Radisson SAS Hotel | [Frankfurt](#)

260 The Westin Leipzig | [Leipzig](#)

266 Arabella Sheraton Bogenhausen | [Munich](#)

272 Hotel Restaurant Ritz | [Munich](#)

278 Hotel Drei Raben | [Nuremberg](#)

284 Zauberlehrling | [Stuttgart](#)

### countryside hotels

292 Hotel Elisabeth von Eicken |  
[Ahrenshoop](#)

298 Dorint Sofitel Söl'ring Hof |  
[Sylt](#)

304 Landhaus Stricker | [Sylt](#)

310 Hanner Restaurant Hotel  
Meetingpoint | [Mayerling](#)

316 Hotel Seerose Elements |  
[Meisterschwanden](#)

322 Hotel Palafitte | [Neuchâtel](#)

328 Architects Portraits  
(selection)

333 Hotel Index

334 Picture Credits /  
Further Participants

**Architecture:**  
Architecture Practice  
Prof. Fred Angerer  
and Gerald Hadler,  
Munich  
**Interior Design:**  
Klein / Haller,  
Mönchengladbach



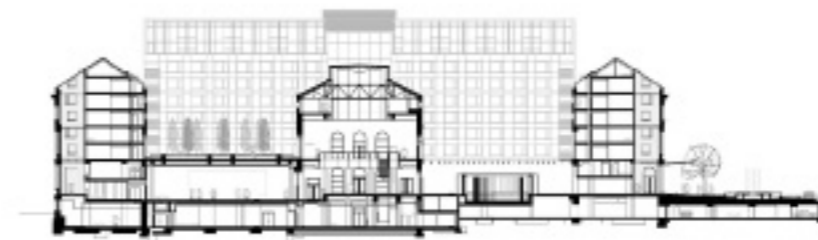
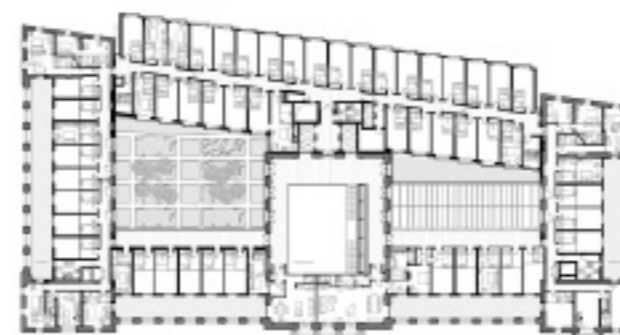
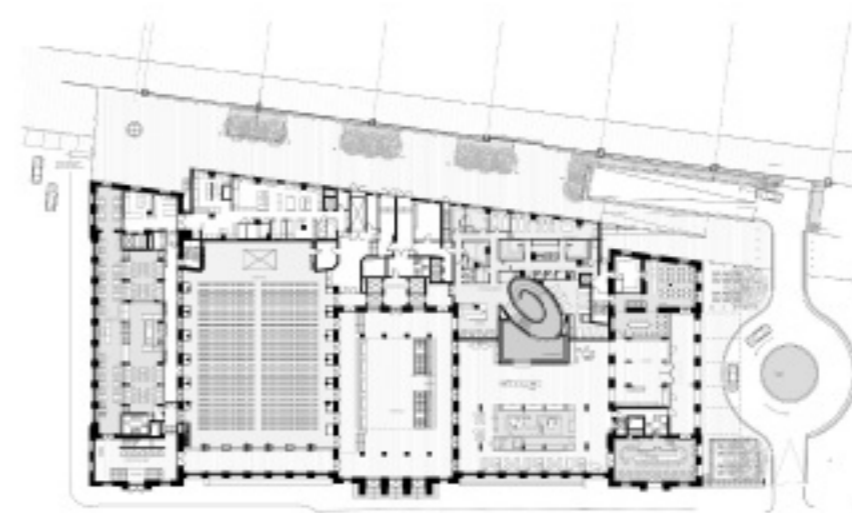
above:  
Eastern side  
below:  
Facade detail  
right:  
Ground plans ground floor,  
1st floor and longitudinal section

# Munich

## Dorint Sofitel

The former royal Bavarian main post office in Munich built from 1896–1900 stood empty and unused for several years.

Post-war alterations hid the characteristic steel structural elements from view and reduced the height of the original spaces. The marginal, subordinate north wing of the building was replaced by a new building. The original interior spatial composition was re-constructed with regard to historic preservationist concerns. This was achieved by inserting a new interior facade that is recessed behind the historic facade. The existing natural stone facades in Italian High Renaissance style were refurbished and the historic hull encloses a modern core. The in-between spaces create a clear break within which the linear, glossy, and clear interior architecture exists. Natural materials were implemented: shell limestone, leather, Indian slate, bronze mosaics, and Rosso-Levanto marble create an exciting sequence of light and dark zones. The captivating spatial sequence which leads guests from the bright entrance to the theatrically staged reception area via the 18 meter high light sculpture beneath the glass roof forms the central element of the interior design concept.

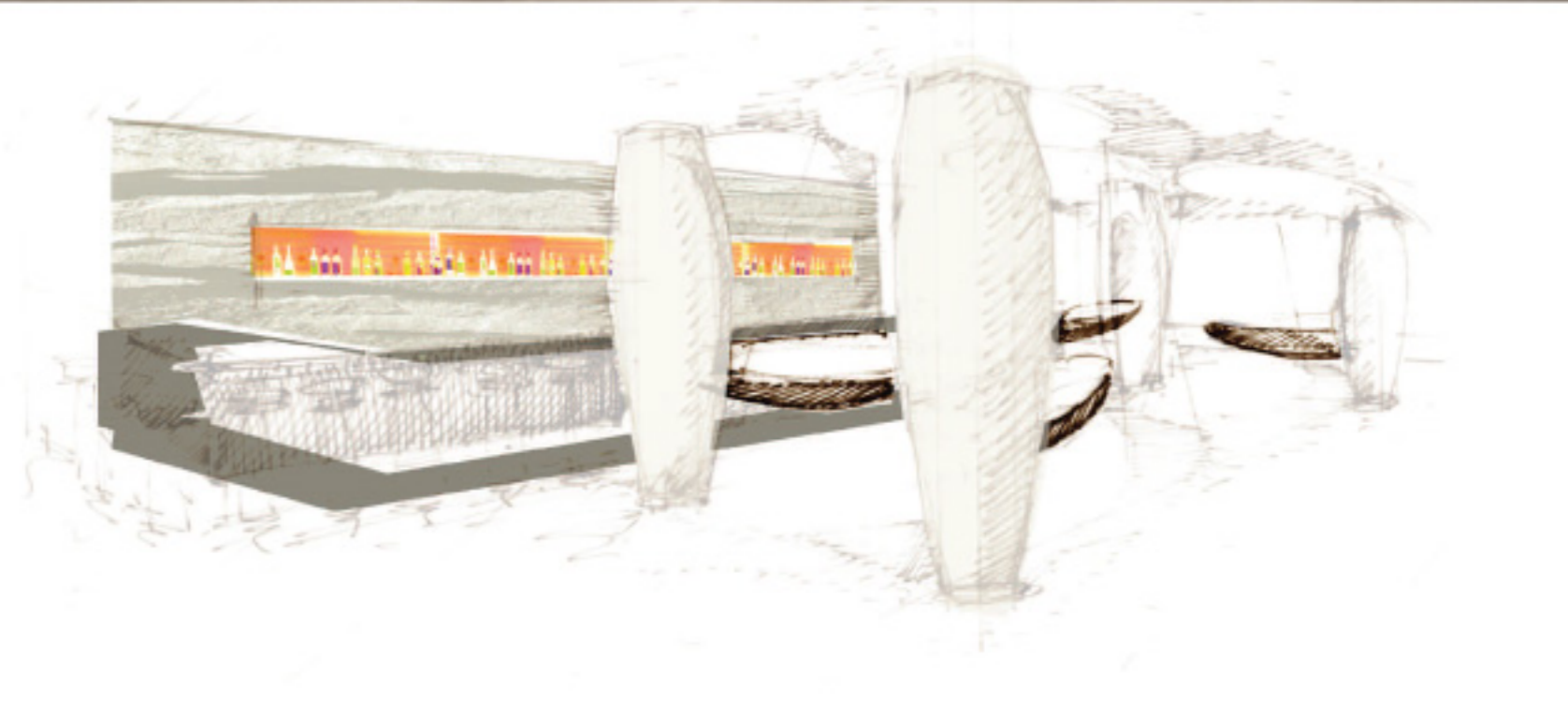




above and mid:  
Suite  
above right:  
Bar



left:  
Wellness area  
right:  
Idea sketch bar



**Architecture:**  
Kajima Corp. Japan  
**Interior Design:**  
Bost Berlin  
Interior Design  
Architecture



# Leipzig

## The Westin Leipzig

The 27-floor 5-star hotel near the city center was originally a gift from Japan to the former

GDR. The modern interior design of the top floor is Asian in flavour. Overhead illuminations in fluid colour designs greet guests as they approach the lift. Bar and lounge have been created around a bar covered in Makassa wood panelling. A highlight of the restaurant is its walk-in red wine storeroom built of glass and maintained at a steady room temperature. The board rooms feature flat-screen monitors which are built into the wall and integrate well with the rest of the rooms' fittings. Glass doors sporting abstract motifs from Japanese stone art open into the washrooms. The siting of the suites at the corner of the hotel gives guests a magnificent view over the city in two directions. All lights, furniture and carpets were designed and produced exclusively for the suites of the Leipzig Westin. In their form, colour and ornamentation they have a timeless beauty and exude relaxation and elegance.



above:  
Restaurant "Falco"  
below:  
View of hall

Per van Droote

# Theme Hotels



BRAUN